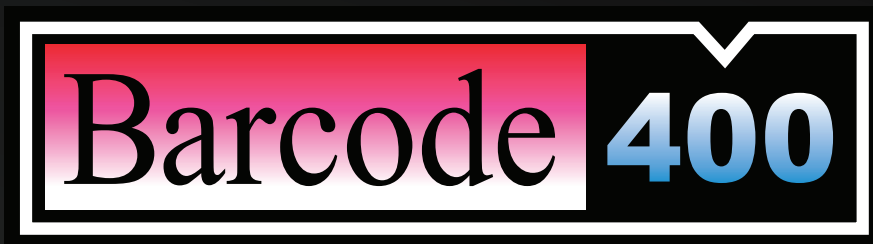


CELEBRATING  
**40**  
YEARS  
SERVING THE IBM<sup>i</sup> COMMUNITY



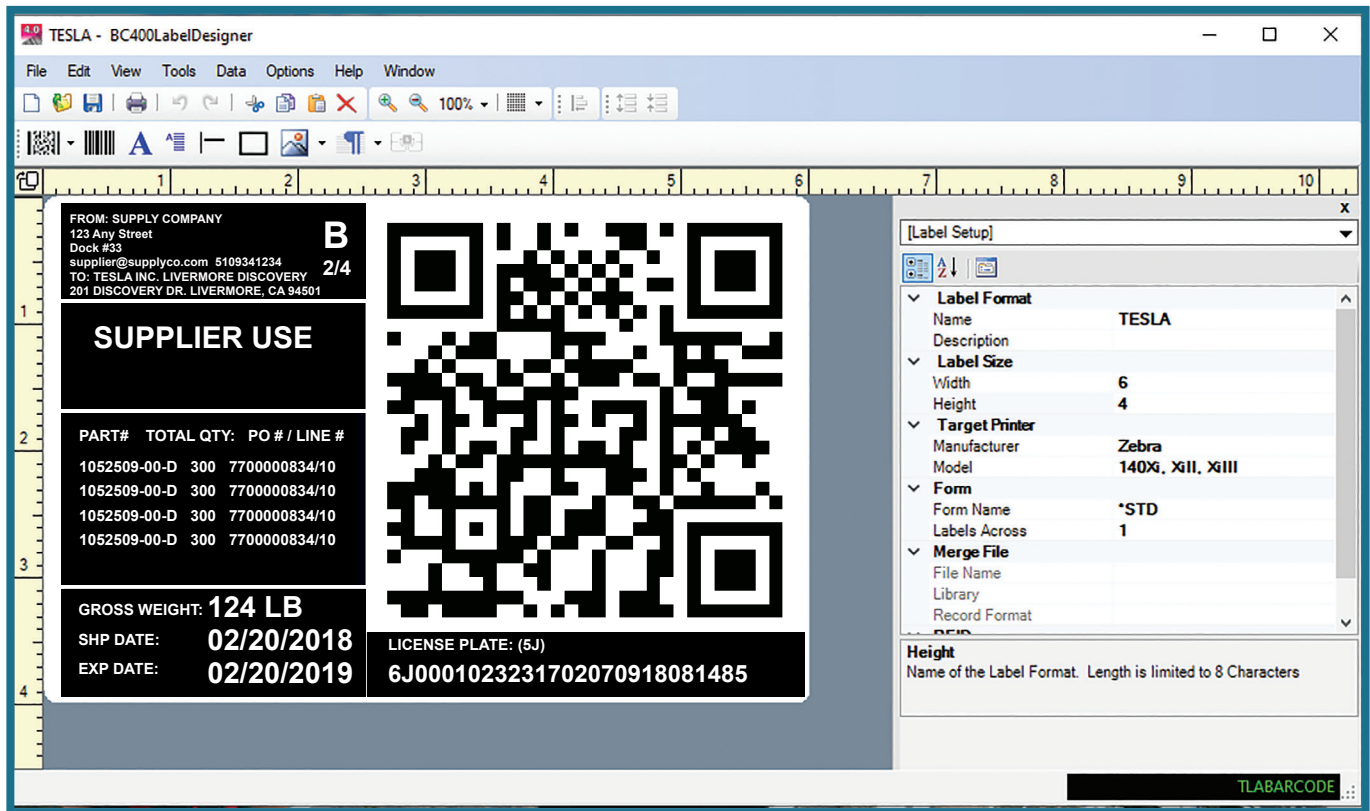
Time-Tested  
Labeling Software  
for IBM i



[www.TLAshford.com](http://www.TLAshford.com) | 800.541.4893

# DESIGN

Barcode400 combines an easy-to-use Graphical Design Interface with the power, reliability and security of the IBM i. The Designer allows you to quickly and easily design any label you require. When you save your label, it's automatically saved to the IBM i creating a centralized labeling architecture with the well-known reliability and security of the IBM i.



- Use True-Type Fonts and MICR Font for check printing
- Full Complement of Bar Codes
  - Code 128, Code 3 of 9, Interleaved 2 of 5, UPC
  - 2D Bar Codes including QR Code, PDF-417, Datamatrix, Maxicode, Micro PDF
- Easily Access Variable Data \*see next page!
  - Merge Data (IBM i File or Application Data)
  - Prompts
  - Incrementing Numbers
  - System Data
- Import and Print Images
- Overlays on HP and compatible printers
- RFID (Radio Frequency Identification)
  - Encode Tags for EPC Specifications or in-house applications.
- Lines and Rectangles

# VARIABLE DATA

## IBM i File Data and Data from Apps

Merge Data is data within an IBM i Physical File, Logical File or Data passed from your RPG, COBOL, CL or JAVA program. \*see Integration.

Using Arrays within the designer makes it easy to create large lists of data.

ORDER#  
0025663  
0022554  
8855698  
1244111  
2185223  
1255848  
9588559

Data Fields

File

Library: #SHIPPROD  
File Name: SHIPMAST  
Record Format: SHIPMASTR

Get Sample Record  
☐ Edit Sample Data

Fields	Sample Data
01 BOL#	55874125
02 BOLDATE	08132013
03 SHIPFRNAME	LASSITER AUTOMOTIVE
04 SHIPFRADR1	94456 BYPASS 24 NE
05 SHIPFRADR2	
06 SHIPFRCTY	DOWNEY
07 SHIPFRST	IA
08 SHIPFRZIP	45875
09 SHIPTOCO	
10 SHIPTOADR1	
11 SHIPTOADR2	
12 SHIPTOADR3	

Select from the above list:

OK Cancel

## IBM i System Data

Use IBM i System Data such as Time and Date on the label.

System Time and Date

Key Words Sample Data

CCCC	2020
DD	08
HH	09
HH:MM:SS	09:15:03
JJJ	8
MM	01
MM.DD.CCCC	01.08.2020
MM.DD.YY	01.08.20
MMDD.CCCC	01/08/2020
MMDDYY	01/08/20
MMDDCCCC	01082020
MMDDYY	010820
mmmm	jan
MMM	JAN
MMname	January
MMNAME	JANUARY
MN	15
QQ	0001
QZ	1
SS	03
YY	20

Select from the above list:

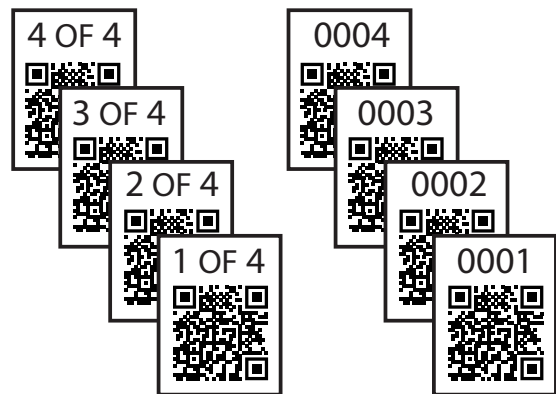
OK Cancel

## Incrementing Numbers

Create Incrementing Numbers - Serial Numbers or Box Counts - to serialize labels.

Box Count

Serial#



## User Prompts

Create Prompts for a label so users are prompted to enter information at print time.

Barcode400 Interactive Label Printing

File Tools Data PDF\_Options Help

Select a label to print from TLBARCODE Search for: tesla

Label Name	Type	Description
TESLA	Z140XI	
TESLA2	HPLASR	Tesla label for Alcoa Walbridge
TESLAK	APPU	Tesla label for Alcoa Walbridge
TESLAORG	HPLASR	Tesla label for Alcoa Walbridge

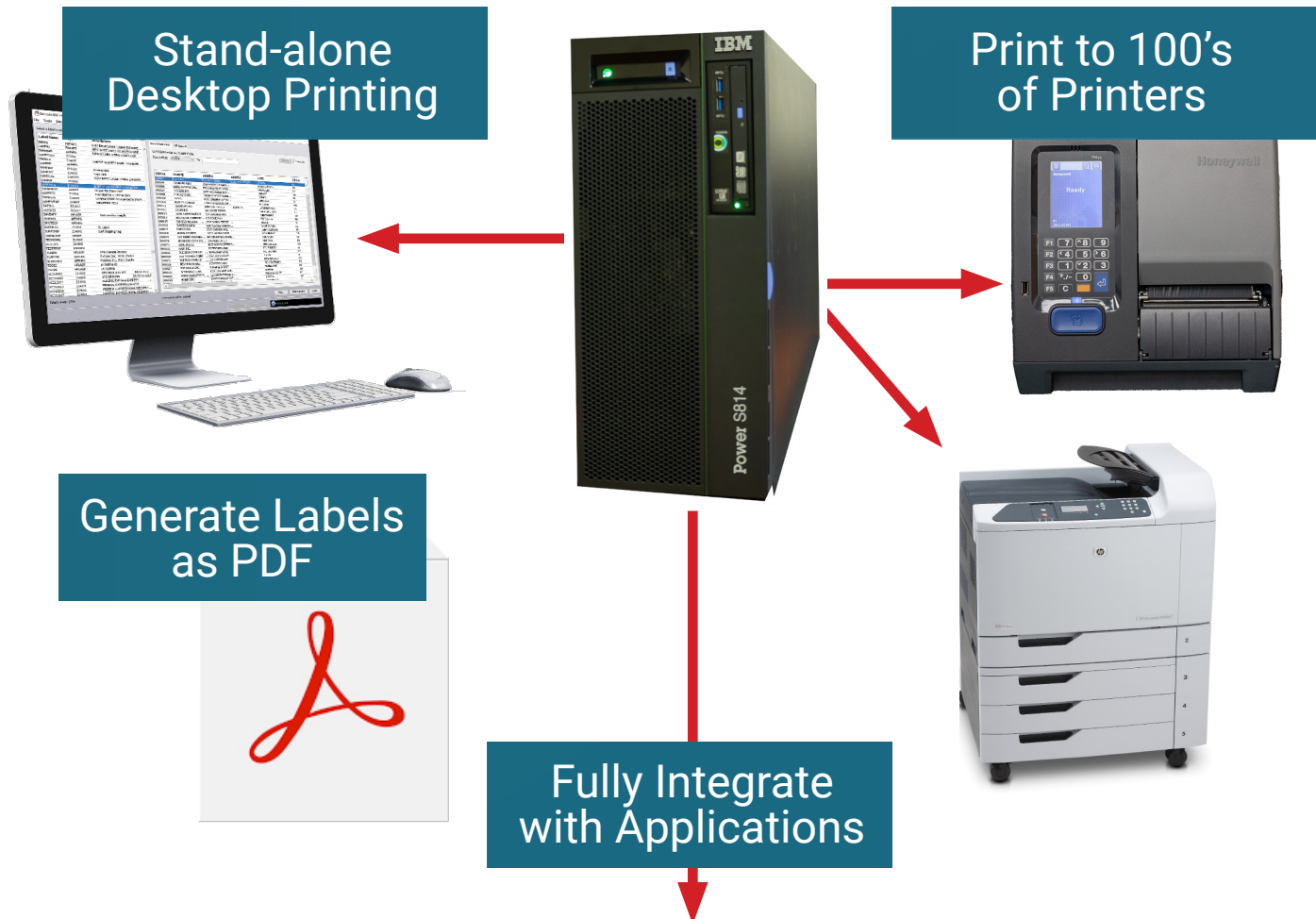
Record Selection Prompted Data PDF Output

Enter Employee Code: AW45

Enter Today's Date: 03.17.2020

# GENERATING LABELS

Barcode400 printing methods accommodate nearly every possible application. Labels can be generated from IBM i menus, from the Barcode400 Interactive Printing Desktop App, in batch mode, and integrated into existing applications using CL, RPG, COBOL or Java programs. Labels can also be generated as PDF documents and archived and/or automatically emailed!



## ERP - WMS - In-House

Barcode400 has been integrated with nearly every application software on IBM i. Labels can be easily integrated into your existing ERP or WMS system, or any in-house application.

### Examples

Infor  
XA-Mapics  
LX-BPics  
System 21  
PKMS  
KBM

Friedman Operating Group  
Varsity  
Logimax  
ICS

JD Edwards  
World  
One World  
SAP  
Cybernetics (VTL)  
LANSA

# INTEGRATION

Barcode400 uses standard CALL statements for RPG, COBOL, JAVA and CL programs, so your labels easily integrate with your existing applications. The simplicity and design provide flexibility and unlimited possibilities for application development.

## Interactive Call

Pass data to the Barcode400 software using a Data Structure within your program.

```
D* Holds variable data being passed to the label print program.
D*
D MrgDta          DS          1024
D  Cust#          1          6S 0
D  Cname          7          31
D  Addr1          32         56
D  Addr2          57         81
D  City           82         95
D  State
D  Zip1
D  Zip2
D  Phone
D  Exten
D  Faxno
D  Name1
D  Name2
D  Filler
```

```
// Barcode400 print driver program
```

```
CallP TlaProgram (LblName :
                  Across  :
                  LblDev  :
                  LblQty  :
                  Demand  :
                  MrgDta  :
                  PerSet  );
```

Call the Barcode400 software and pass parameters to tell the software what labels to print, what output queue to print to, how many labels to print and what data will print on the label.

## Want to print a label for every record in a file?

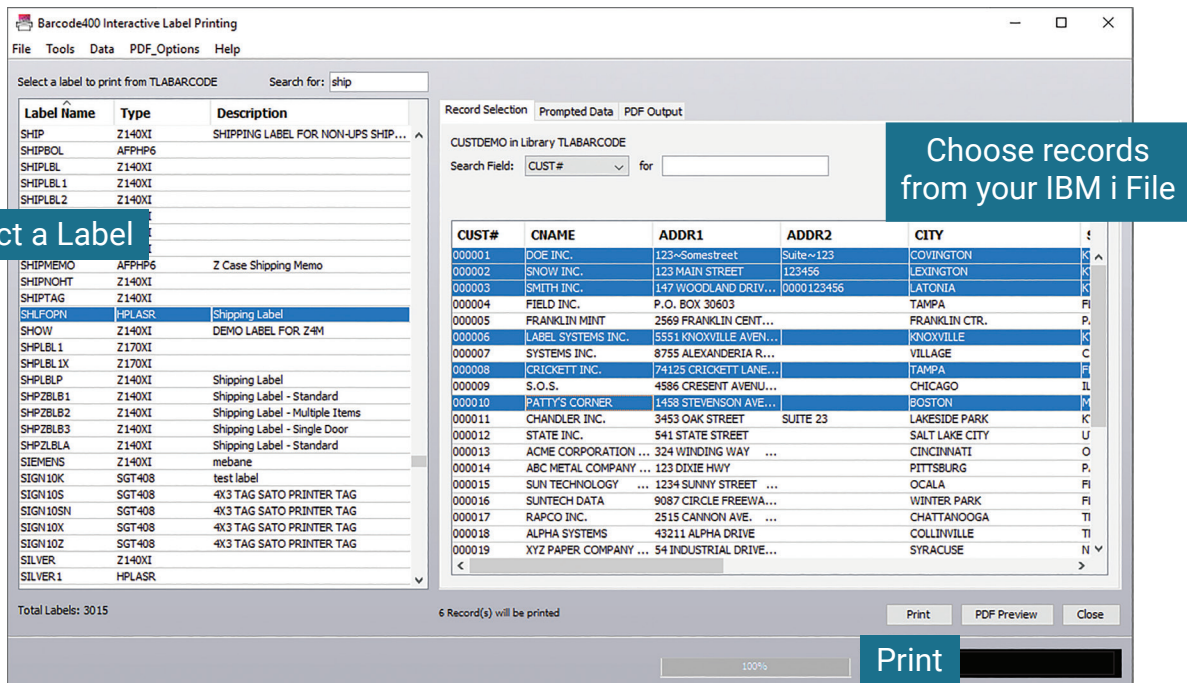
Easily print a label or labels for every record in an IBM i file using our Batch application. Tell Barcode400 the label to print, the file to use, and where to print the labels.

```
/*Execute Barcode400 LBLBATCH command to print the Barcode400
Label */
```

```
LBLBATCH    LBLNAM(&LabelName) QTYOVR(0001) OUTQ(&Outq) +
            MRGFILE(&FileName) MRGLIB(&LibName) MRGMBR(&MbrName)
```

## Interactive Label Printing from the Desktop

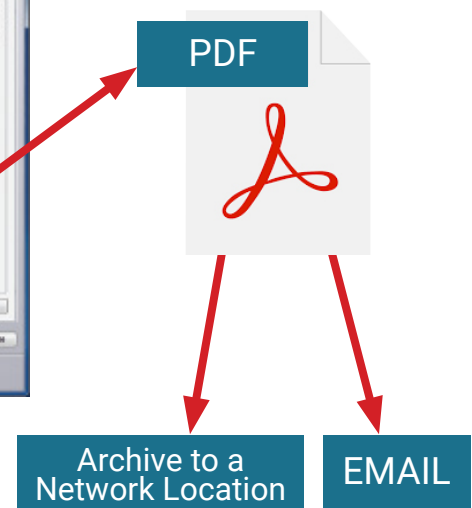
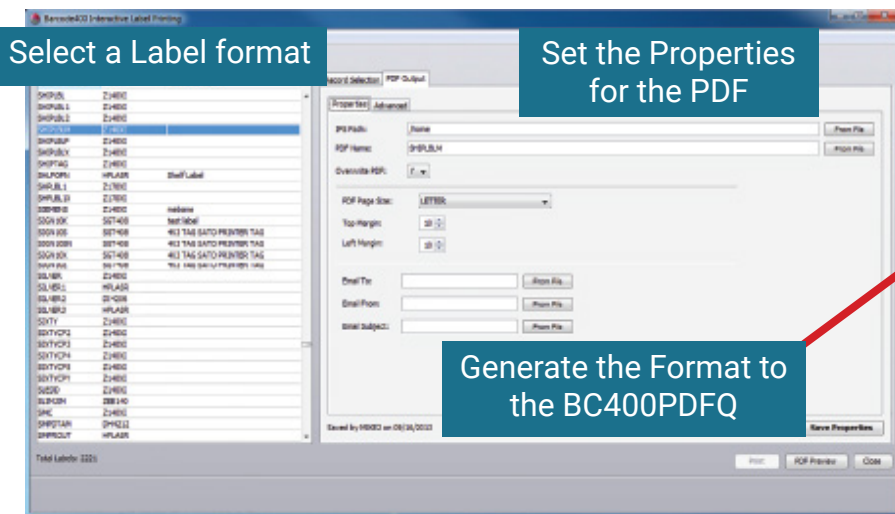
The Interactive Label Printing application is distributed to desktops where users can interactively print labels by selecting a label to print, selecting records from IBM i files, and/or keying data into prompts created during label design.



The Interactive Label Printing app can be loaded onto as many PC's as necessary, and requires **NO Programming!**

## Generate Labels as PDF Documents

Barcode400 can generate your labels as PDF documents. Your PDF documents can be archived to any network location, automatically emailed and printed.





## PRINTERS SUPPORTED

Barcode400 supports hundreds of thermal transfer printers as well as HP and compatible laser printers - including copiers. Printers can be connected in a variety of ways, from Ethernet and Wireless to Twinax. Our technical support team will assist you to make sure your printers are connected and functioning properly with Barcode400.



Advanced Poly  
Argox  
ATC  
Avery-Denison  
Citizen  
Datamax-O'Neil  
Datasouth  
Decision Data  
Eltron/RJS  
Facit  
Fargo  
Genicom  
Godex  
HP (and Compatible)  
IBI  
IBM  
Inducomp  
Intermec/Motorola  
Meto  
Microplex  
Monarch  
Novexx  
Paxar  
Printek  
Printronix  
RJS  
Sato  
Sharp  
Standard Register  
Superior Machine  
Tally  
TEC  
Tharo  
TSC  
Unimark  
Willet  
Zebra

See a full list of printers  
and models at  
[www.tlashford.com/printers](http://www.tlashford.com/printers)

# COMPLIANCE LABELS

What is a Compliance Label? How can Barcode400 help you?

Compliance labels are specific label designs required by particular industries (Automotive - AIAG, Medical - HIBCC, Retail - UCC/EAN), companies, or both. If you are working with a business partner and that business partner requires you to design a label a specific way, that's a compliance label. Your company must design a label format to look exactly like that required by your customer or business partner. Failure to meet these requirements might result in charges or even lost business!

SHIP FROM: T.L. Ashford 525 W. Fifth St Covington KY 41011	SHIP TO: Wal-Mart Dist. Center #04 1901 Hwy 102 East Bentonville, AR 72712
(420) SHIP TO POSTAL CODE <b>(420) 72712</b>	CARRIER: Carrier Name PRO: 123456789 B/L: 123456789
PO: 0433124568 WMIT: 001	DC NUMBER <b>6004</b>
CARTON 3 OF 6 10 PACK / 12 PCS EA	
(00)0 0012345 55555555 8	

WalMart

From: T.L. Ashford 525 W. Fifth St Covington, KY 41011	To: Target DC 0578 13790 Harvey Road Tyler, TX 75706
Ship to Postal Code: <b>(420) 75706</b>	
PO#: 0030-0889129-0678 DPC: DS0060998 Casepack: 12	Style: 43283 Color: Blue Size: 3
SSCC (00)1 0422730 000000114 5	

Target

Lexington KY 40511 United States	WPX	DHL
TO: 21 Sassoon Road, 2/F L2-44, Li Ka Shing Faculty of Medi Hong Kong Faculty of Medicine	Contact: HUANG BOSHENG 00852-61359418	ORIGIN: SZX
NILL, HONG KONG, HO Hong Kong		
<b>HK-HKG-HKC</b>		
DESCRIPTION: E-Book Reader (530-1011-06) - New (count 2) Service: DTP		
Account No.: 845958803	Date: 2011-10-11	Shpt Weight: 2.70 lb.
EET: NOEEI sec. 30.37 (g)		Piece: 1/1
These commodities, technology, or software were exported from the United States in accordance with the Export Administration Regulations. Obsolete, contrary to U.S. law prohibited.		
DST1vWpSR		
AWB: 7329159913		
(2L) PH2100+4200000		
(J)J000 30 1949 0091 5991		
WPX		

DHL

From: JOHN DOE T.L. ASHFORD 525 W. FIFTH ST. COVINGTON, KY 41011	SHIP DATE: 01JAN04 ActWgt: 5 LB DIMs: 10 x 10 x 10 Account: \$ 112051180
TO: JOHN HENRY MAIN STREET HARDWARE 251 MAIN STREET DOCK #2 CINCINNATI, OH 45255 (658) 688-5678	Ref: 114802027 2817020-48
FedEx Express	
MON - 18FEB A1 PRIORITY OVERNIGHT	
TRK# 5477 5016 6212	68046 MAIN STREET HARDWARE 251 MAIN STREET
<b>XX AIAA</b>	

FedEx

## We Can Help!

We maintain a library of pre-designed label formats required for over 500 companies, and, as part of the TL Ashford maintenance family, we provide these formats to you at no charge. If you need a specific design, and we happen not to have it, we'll design it for you.

**We take the work out of compliance labeling!**

FROM: T.L. ASHFORD 211 GRANDVIEW DR. CRESCENT SPRINGS KY, 41017 800-541-4893 ASSEMBLED IN USA	TO: GENERAL MOTORS CORP ORION ASSEMBLY PLANT BUILDING 3 LAKE ORION, MI 48359 PLANT/DOCK: LC 15C	<b>MIXED LOAD</b>
PART NUMBER 12345678	TOTAL QTY 1000	PART NUMBER 12245678
# PACKS 5	QTY PER PACK 200	TOTAL QTY 1000
PART NUMBER 10345678	TOTAL QTY 750	PART NUMBER 12005678
# PACKS 5	QTY PER PACK 150	TOTAL QTY 1000
GROSS WEIGHT: <b>9999 KG</b>		
UN 123456789 A2B4C6D8E		

General Motors

FROM: SUPPLY COMPANY 123 Any Street Box 433 Supplier@supplyco.com 5109341234 TO: TESLA INC. LIVERMORE DISCOVERY 301 DISCOVERY DR. LIVERMORE, CA 94550	<b>B</b> 2/4
<b>SUPPLIER USE</b>	
PART#	TOTAL QTY: PO # / LINE #
1052509-00-D	300 7700000834/10
1052509-00-D	300 7700000834/10
1052509-00-D	300 7700000834/10
1052509-00-D	300 7700000834/10
GROSS WEIGHT: <b>124 LB</b>	
SHIP DATE: <b>02/20/2018</b>	LICENSE PLATE: (SJ)
EXP DATE: <b>02/20/2019</b>	<b>6J0001023231702070918081485</b>

Tesla



## RFID



Radio Frequency Identification consists of having an RFID chip embedded within your label stock. The chip is encoded with information based on EPC/RFID requirements, or maybe data dictated by your specific application. The process of encoding this chip involves converting your data to binary, piecing it back together into hex, then encoding it onto the chip. YES, it's complicated.

**Barcode400 makes RFID simple.** Provide the data from your IBM i file or program. We'll take care of the rest. Using the Barcode400 RFID option, it's that easy!

## BENEFITS OF BEING ON IBM i

Why is the IBM i the best place to house your labeling application?

Barcode400 is the best of both worlds - a Graphical designer coupled with the Power and Security of the IBM i. When you design a label format, that format is saved within the Barcode400 software on the IBM i.

- Your labels use the same data used by your applications - data from your IBM i files and programs!
- As soon as labels are designed, they are immediately available to everyone connected to the IBM i.
- With centrally-located labels, there is no need to maintain the same label format on multiple PC's.
- Your labeling system is backed up as a normal part of your IBM i backup procedures.
- Legendary Reliability, Security and Integrity of the IBM i platform!



# TECHNICAL SUPPORT

The most valuable part of your TL Ashford experience -  
**OUR PEOPLE!**

We're well known for our cost-effective software, but we're best known for our exceptional technical support! Our staff has over 100 years of experience supporting our products, and our company is committed to providing you with the best experience possible working with our software!



"It was an absolute pleasure working with you!! I've been in IT for 30+ years and have seldom worked with someone like you!

Thank you!!"

"Very reasonably priced and comes with great technical support. I can chat or email, but when I call, I'm on the phone with someone within a few minutes to get my issue worked out. That just doesn't happen these days."

"Thanks for always being so incredible with your support. I recently had the most frustrating experience with another vendor's product and support, and in the end they actually invoiced us for the help they gave me to get it going.

You guys are really always there for me when I need you, and you never make me feel bad for asking. Thanks for being so wonderful to work with."

***Our support team has extensive knowledge about all facets of our products. Here's what we'll help you with:***

**We help you:**

- Designing Labels & Forms
- Creating Reports
- Bar Code Symbolologies
- Creating Graphics
- Creating Overlays
- Radio Frequency Identification (RFID)
- Meeting Compliance Specifications
- Providing you with Pre-Defined Compliance Labels

**We help you configure:**

- Configuring Printers
- Configuring Output Queues on the IBM i
- Connecting Printers to the IBM i
- Integrating Barcode400 into existing applications

**We help you become an expert:**

- Training using our software
- Industry Expertise
- Assistance with Updates and Upgrades
- On-line Training Resources

# FREQUENTLY ASKED QUESTIONS

## Do I have to be a programmer to use Barcode400?

No. Anyone can design and print labels with Barcode400. Users with a basic knowledge of CL, RPG, COBOL or Java can integrate Barcode400 into existing applications.

## Can more than one person use the software at any given time?

Yes. Several users can use the software at the same time. For example, someone can be designing a label while someone else is printing labels.

## Do I have to have a designated terminal for label design?

No. You can design and print labels from any terminal or PC connected to your IBM i.

## What kind of guarantee do I get with Barcode400?

TL Ashford offers a 30-day, fully-functional trial of our product which includes complete access to our technical support staff and resources.

## Does Barcode400 support two-dimensional bar codes?

Yes. Barcode400 supports 2-D bar codes (PDF, Maxicode, Datamatrix, QR Code) that are in wide use today.

## Do I need a PC to design labels?

Not necessarily. Barcode400 offers both a graphical user interface for the PC and a traditional 5250 (Green Screen) designer.

## Do I have to download data to my PC before printing labels?

No. Barcode400 utilizes data directly from the IBM i.

## When I use the graphical designer, do I have to back up the formats on the PC?

No. Formats are stored on the IBM i, and can be accessed by anyone on the IBM i with the proper security clearance.

## Can I call Barcode400 from within my existing RPG, COBOL, CL or Java programs?

Yes. External program calls can be made to the barcode labeling system. Barcode400 also has an integration assistant to help generate source code for your applications.

## Do I have to create new files for retrieving information to print on my labels?

No. Barcode400 uses existing data files on the IBM i.

## Are my data base files updated?

No. Barcode400 does not alter or update data base files.

## Is Barcode400 pricing user based?

No. The price is based on the number of printers per CPU. It is not tiered by the number of users, and the graphical label designer has no limit to the number of users.

## Is technical support available?

Absolutely. We take great pride in providing exceptional support to our customers, and have been recognized throughout the industry in providing outstanding service. Three months of technical support is included with your purchase.

## Are software updates and enhancements provided?

As part of our low-cost Software Maintenance Program, we provide access to updates for no additional charge.

Want an Easy way to do Foms on the IBM i?



TLA Forms converts existing IBM i spool files into high quality, professional forms. Use a GUI Designer to create forms using data from a spool file and/or data from IBM i files. Forms can be designed in full color using true-type fonts, bar codes, color images and more. The software generates your forms as PDF documents that are saved to the network, automatically emailed and/or printed. No programming is required to generate the new forms from existing ERP, WMS or in-house application software.

Go to [www.tlashford.com](http://www.tlashford.com) to learn more and download a free, 30-day trial of TLA Forms.



We're a group of software developers, technicians, sales and support staff, writing software for bar code labeling and forms generation. We love to work directly with our customers to help implement and use our software to be as productive as possible.

We were founded in 1983 to produce labels for products that were shipped to US government installations. Over the years, we've worked with thousands of companies all over the world, in virtually every industry, to design and generate bar code labels and forms in order to make their businesses more efficient.

We pride ourselves on writing clean, effective software, and backing our products with the best technical support in the industry. Our headquarters, and our entire staff, are located in the greater Cincinnati/Northern Kentucky region just across the mighty Ohio River and a few miles south of downtown Cincinnati.